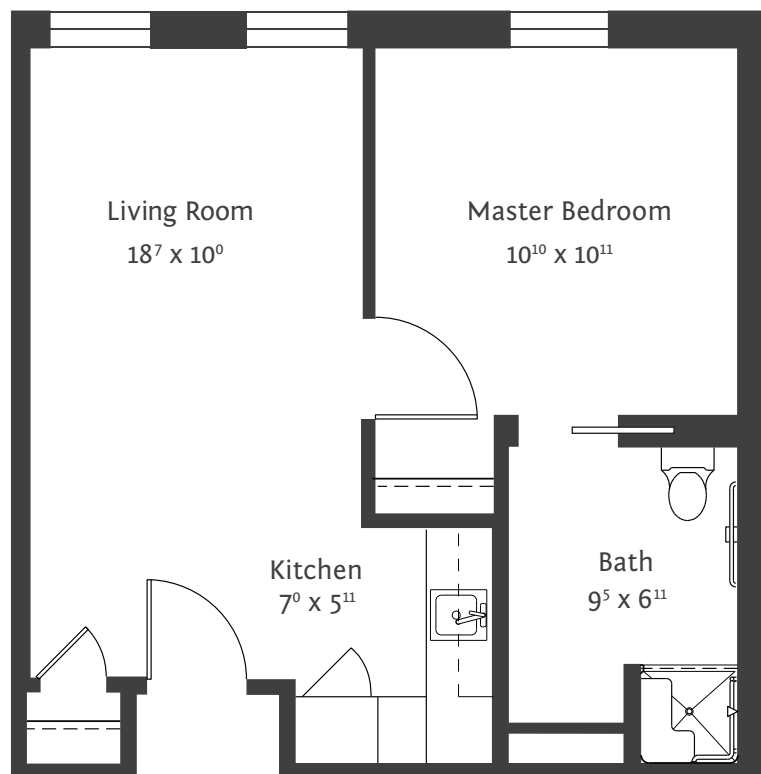


# The Persimmon | Assisted Living Suite

488 S/F | One Bedroom | One Bath

## All-Inclusive Pricing & Amenities

You will pay one rate for all your care while in Assisted Living and Memory Care. This easy All-Inclusive Pricing will allow you to budget more effectively and never worry about hidden fees or add-ons every month.



3 of 3  
Assisted Living Floorplans

2460 Glebe Street  
Carmel, IN 46032  
Phone: 317-733-9560  
Stratford-Living.com

## Features and Amenities

- Apartments - studio to one-bedrooms w/ private bathrooms
- Wellness Center w/ indoor, heated therapy pool
- Salon & Spa
- The Stratford Dining Experience
- Full Service Bar
- Anytime snacks
- Courtyards, libraries and gathering rooms
- Maintenance-free living
- All utilities including cable and Wi-Fi

## The Stratford Advantage

- All-Inclusive Pricing in Assisted Living and
- Alzheimer's & Dementia Care
- 24/7 on-site registered nurse
- Pet friendly community
- Daily social calendar to stimulate the brain and body
- 24-hour emergency response system
- Evening campus security
- Concierge Service