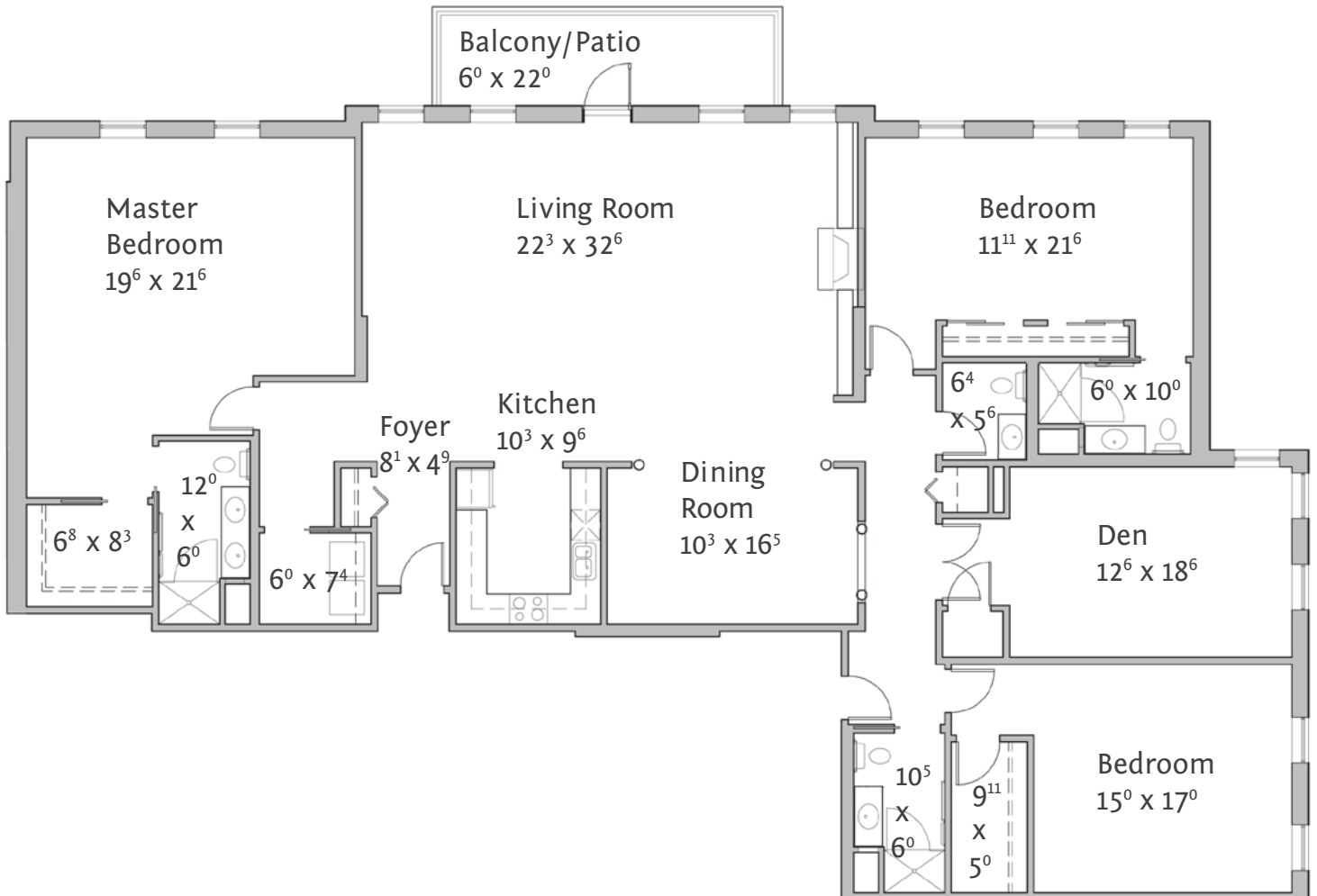


The Regent P7 | Penthouse

3,234 S/F | Three Bedroom | Three 1/2 Bath



- Maintenance-Free Living
- Weekly Housekeeping
- Daily Dining
- Bill Payment
- Transportation
- Safety
- Pets Welcome
- 24-hour emergency call system
- Underground Parking
- Transition Services
- Award-Winning Wellness Center
- Access to Health Care
- Heated Indoor Pool
- Signature Events & Social Gatherings



Penthouse Floorplans

2460 Glebe Street
Carmel, IN 46032
Phone: (317) 733-9560
Stratford-Living.com